

## Document authenticity verification device Regula 4303M



**The device is intended for advanced authenticity verification of passports, ID cards and other travel documents, visa stamps and seals, including but not limited to entry permits, driving licenses, vehicle registration certificates and other vehicle related documents, banknotes, revenue and special stamps, securities and other documents with security features.**

Regula 4303M is constructed in an aluminum metal body as a single unit for desktop use. Control buttons on the front panel are responsible for the activation of light sources in different examination modes.

The device has a spacious working area over the object stage, clamps for fixing examined documents and a special shield protecting from harmful effects of ultraviolet radiation.

Product design provides a possibility to place a 10x magnifier [Regula 100X](#) and a torch right on the device body.

## Functionality

- Capturing images by a photo camera and saving examination results. Supported camera models:
  - Canon PowerShot G10, G11, G12 with LA-DC58K adapter
  - Canon PowerShot G15 with LA-DC58L adapter

## The photo camera is not included into the delivery set.

- **Examinations on different levels**
  - **protection of the document basis**
    - paper opacity, watermarks, security fibers, planchetes, security threads, foil stamping, pole feature, all types of windows, transparent vanish coating, shadow images, etc.
  - **printing methods**
    - *intaglio*: texts, guilloche frames, rosettes and vignettes, microprinting, latent images and moire patterns, signs for the visually impaired, blind embossing, colour shifting ink, including OVI with embossing and latent images, etc.
    - *letterpress*: serial numbers, texts, barcodes, etc.
    - *offset printing* including Orlov and rainbow printing: texts, microprinting, moire patterns, background and anti-copy patterns, etc.
    - *screen printing*: security features with optically variable effects, etc.
    - see-through register
    - perforation
  - **physicochemical protection**
    - UV luminescence with different wavelength
  - **complex security features**
    - retroreflective protection
    - special polymer coating of security laminates
    - metallized coating
    - laser engraving
- **Additional examination of**
  - document alterations such as erasure, etching etc.
  - traces of signature forgery
  - document mechanical defects such as cuts, tears, folds, etc.

## Application

- Border control/immigration services
- Customs authorities
- Law-enforcement agencies
- Forensic laboratories
- Financial institutions
- Other agencies and organizations authorized to check documents

## Delivery Set

- Document authenticity verification device **Regula 4303.XXM**
- Torch for **Regula 4303.03M**

- Magnifier [Regula 1001M](#)
- Clamps for fixing examined documents for **Regula 4303.03M**
- Optionally:
  - Magnifiers [Regula 1002M; 1003M; 1004M](#)
  - Power supply through vehicle on-board system 12 V

Functionality			Model		
			4303.01M	4303.02M	4303.03M
Light sources	white	incident	+	+	+
		oblique	+	+	+
		coaxial	+	+	+
		transmitted	+	+	+
		oblique (external)			+
	ultraviolet, nm	254		+	+
		313			+
		365	+	+	+
Photo camera adapter			+	+	+

Maximum document size, mm — 210×300 (A4)

Dimensions (length × width × height), mm — 380×260×310

Weight, kg — 7,5

Power supply voltage, V — 230

Power consumption, W — 30



White top light



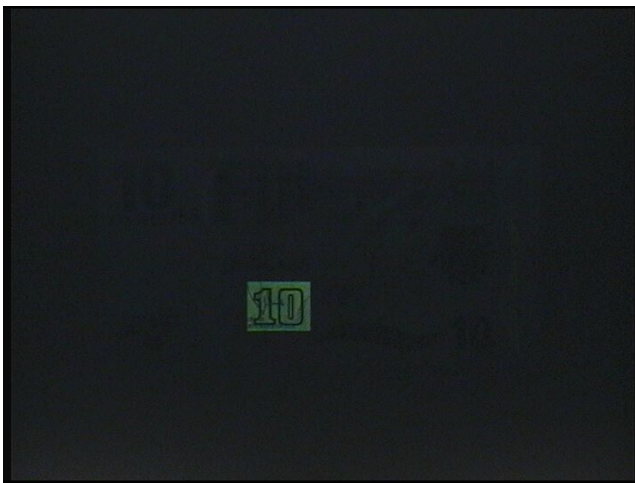
White oblique light



White coaxial light



White transmitted light



Ultraviolet top light (254 nm)



Ultraviolet top light (313 nm)



Ultraviolet top light (365 nm)